




<https://zoobank.org/urn:lsid:zoobank.org:pub:371C0FDA-222C-4343-A14D-47C79A7259D4>

## *Planuncus laguerrei* sp. nov. from Peru (Lepidoptera: Erebidæ: Arctiinae)

VITALY M. SPITSYN<sup>1</sup>, VYACHESLAV V. DOROSHKIN<sup>2</sup>, ELIZAVETA A. SPITSYNA<sup>1</sup>,  
ROMAN V. YAKOVLEV<sup>3, 4</sup>


<sup>1</sup> N. Laverov Federal Center for Integrated Arctic Research of the Ural Branch of the Russian Academy of Sciences,  
Nikolsky Avenue, 20, 163020, Arkhangelsk, Russia.

 <https://orcid.org/0000-0003-2955-3795>,  <https://orcid.org/0000-0002-4616-0988>

<sup>2</sup> Bratiev Kashirinykh 151–49, Chelyabinsk, 454004, Russia.  <https://orcid.org/0000-0002-8612-421X>

<sup>3</sup> Altai State University, Lenina 61, Barnaul, 656049, Russia.

<sup>4</sup> Tomsk State University, Lenina Prospekt 36, 634050 Tomsk, Russia.

\* Corresponding author. E-mail: [yakovlev\\_asu@mail.ru](mailto:yakovlev_asu@mail.ru),  <https://orcid.org/0000-0001-9512-8709>

Received 30 November 2022 | Accepted by V. Pešić: 8 December 2022 | Published online 9 December 2022.

### Abstract

The article describes *Planuncus laguerrei* sp. nov. distributed in Peru (Junín province). Holotype deposited in the Zoological Institute, Sankt-Petersburg, Russia. The article has 4 illustrations.

**Key words:** taxonomy, biodiversity, Andes Mountains, South American, new species.

### Introduction

The genus *Planuncus* (Lepidoptera: Erebidæ: Arctiinae) was established by Cerda (2022: 151) for *Pseudomya absona* Draudt, 1916 (by original designation). Cerda included into the genus three previously described species distributed in the South America: *Pheia rica* Dognin, 1897 (type locality: Ecuador, Loja), *Pseudomya absona* Draudt, 1916 (type locality: Peru, Marcapata), *Gymnelia peratea* Dognin, 1910 (type locality: Alto de las Cruces, près San-Antonio, Cali, Colombie), and described two new species: *Planuncus cahureli* Cerda, 2022 (type locality: Equateur, Pacto, Pichincha), *P. gradosi* Cerda, 2022 (type locality: Pérou Huanuco). Examining the materials collected by second author we found a new species of the genus from the Peru, its description is given in this article.

### Materials and methods

The male genitalia were mounted in euparal on slides following Lafontaine and Mikkola (1987). The slides were photographed using an Olympus DP74 camera attached to an Olympus SZX16 stereomicroscope at the

Altai State University. The type material is deposited in the Zoological Institute, Sankt-Petersburg, Russia. The images were processed using Corel Photo-Paint 2017 software.

## Taxonomy

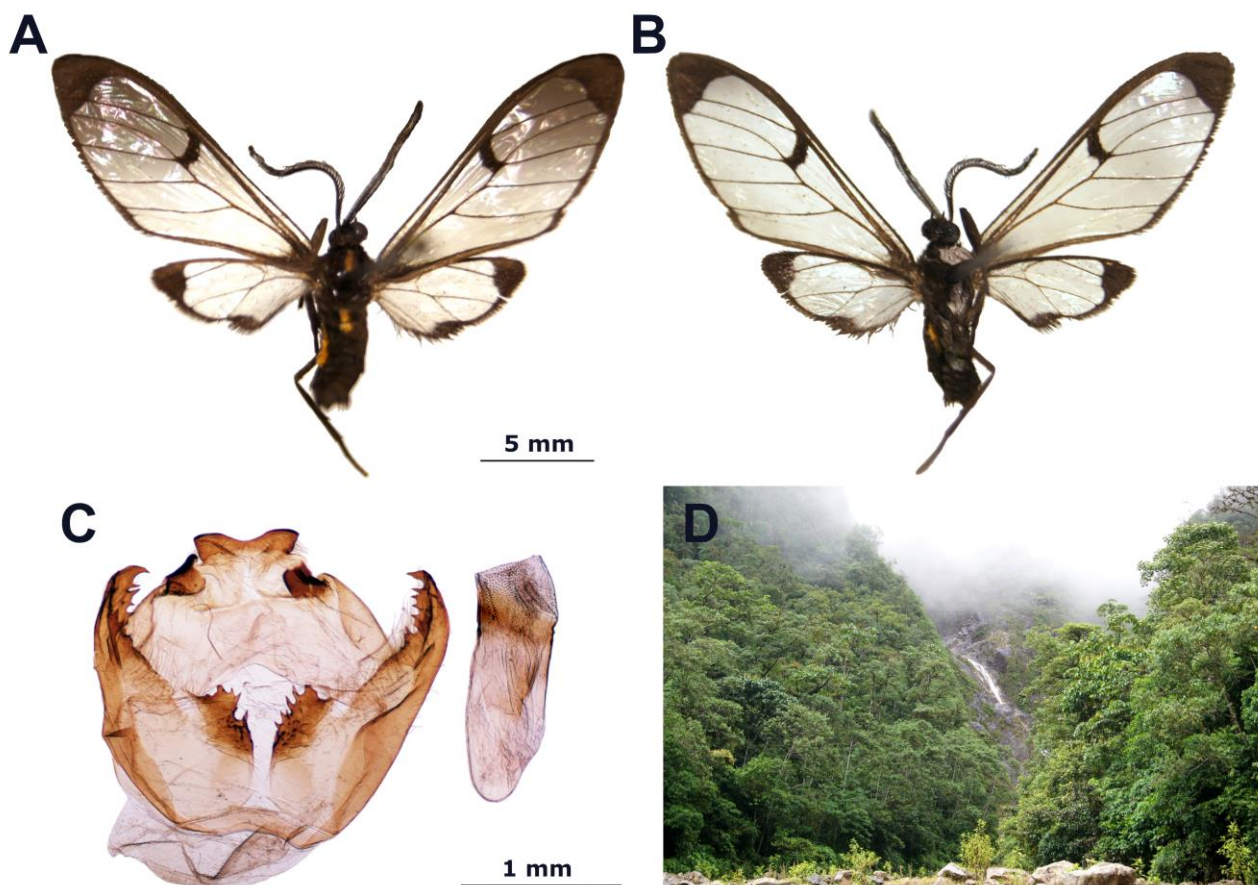
### *Planuncus laguerrei* sp. nov.

<https://zoobank.org/urn:lsid:zoobank.org:act:71138A86-E990-4CFF-A6D8-6BCEBAE3D215>

Fig 1A–C

**Type material.** *Holotype* male: PERU, Junín province, road Satipo-Mariposa, 600–700 m, 29.xi.2000, V. Doroshkin leg. (Zoological Institute, Sankt-Petersburg, Russia).

**Diagnosis.** The new species is similar to *Planuncus absona* (Draudt, 1916) and *Planuncus cahureli* Cerda, 2022. However, it can be distinguished from it by having a one yellow line on the dorsal side of the thorax and the two first segments of the abdomen. *Planuncus laguerrei* sp. nov. differs from species of the genus *Planuncus* Cerda, 2022 by a specific basal saccular process having the appearance a sclerotized plate with spines.



**Figure 1.** Holotype male of *Planuncus laguerrei* sp. nov. and type locality: A) upperside; B) underside. Scale bar = 5 mm; C) male genitalia and aedeagus. Scale bar = 1 mm; D) Type locality of *P. laguerrei* sp. nov. near Satipo, Peru.

**Description.** *Male.* Wingspan 26 mm, forewing length 14 mm. Eye black. Antenna black, branches long. Frons and vertex black. Thorax black with a yellow line on the dorsal side. Patagium and tegula black. Legs black. Forewings almost transparent, with dark brown outer and anal margins. Apex of forewings and upper part of costal margin (from top of central cell) dark brown. Apex of central cell with large black spot. Hindwings transparent, with blackish brown apex and outer margin. Underside of both wings follows pattern of the upper side. Dorsal side of the abdomen black, with yellow line on the first and second segments. *Male genitalia.* Tegumen large and broad, with two socii at the base of uncus. Uncus short, broad and flat, slightly

bifurcated apically. Valva narrow and curved, with series of spines in the apical part; basal saccular process having the appearance a sclerotized plate with spines. Aedeagus short and broad.

**Distribution.** This species is not known beyond its type locality on Peru.

**Etymology.** The new species is named after the well known French entomologist Michel Laguerre (Paris) who helped us with the correct generic identification of the new species.

### Acknowledgements

We express our gratitude to Michel Laguerre (Paris) for help with material and literature and to Artem Naydenov (Barnaul) for the technical assistance. This study was partly supported (Dr. Vitaly M. Spitsyn) by the Russian Ministry of Science and Higher Education (project No. FUUW-2022-0069).

### References

- Cerda, J.-A. (2022) Descriptions d'un nouveau genre *Planuncus* et de deux nouvelles espèces d'Équateur et du Pérou (Lepidoptera, Noctuoidea, Erebidae, Arctiinae, Arctiini, Euchromiina). Neuvième note. *Bulletin Mensuel de la Société Linnéenne de Lyon*, 91 (7-8), 150–160.
- Lafontaine, J.D. & Mikkola, K. (1987) Lock-and-key system in the inner genitalia of Noctuidae (Lepidoptera) as taxonomic character. *Entomologiske Meddelelser*, 55, 161–167.